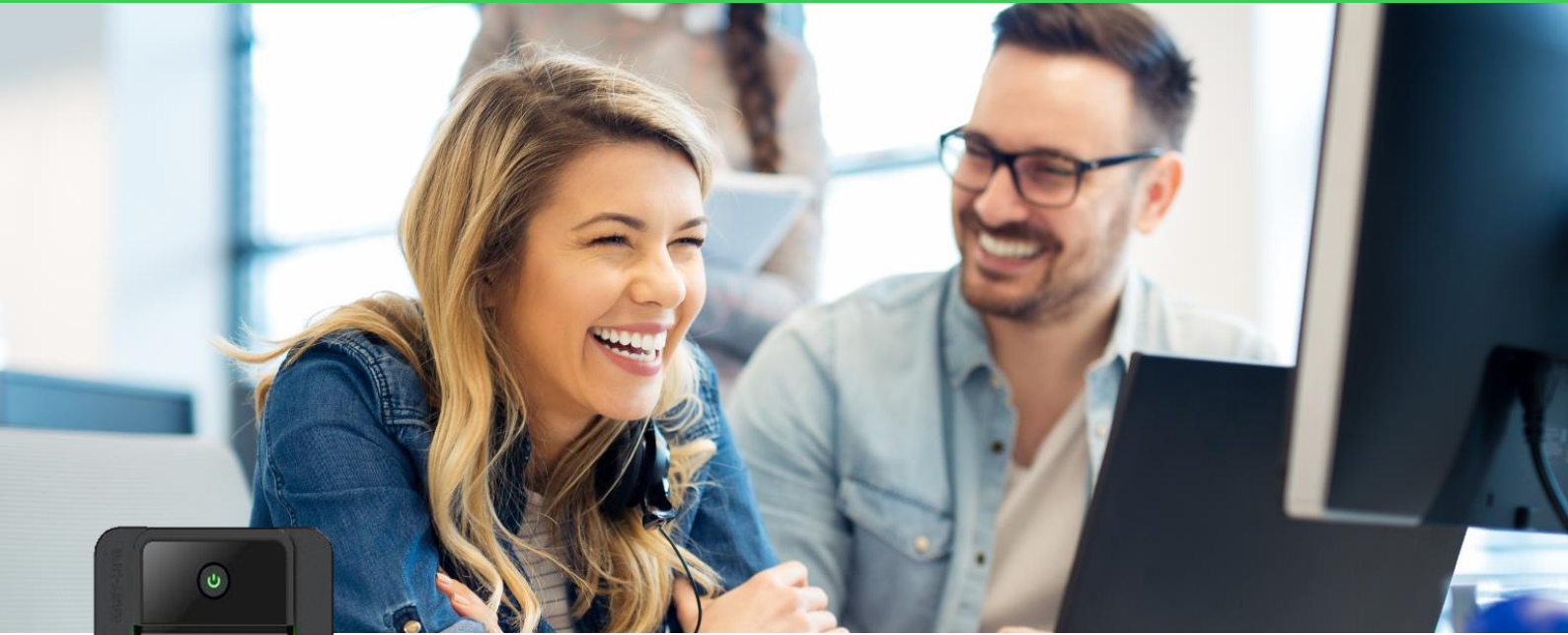


# Advanced Power Protection

APC Back-UPS BX Series 750VA – 2200VA



**APC™ Back-UPS™ BX series** is a cost effective power protection solution for home and home office environments. The series comprehensive VA range with premium features further enables single UPS capabilities

Ideal Power Protection for the following environments and devices:



## Home Office

Work from home & remote learning devices

- Modem / Router
- PC Desktop Computer
- PC Monitor
- Network-attached Storage



## Home Entertainment

Living room essentials

- Modem / Router
- TV Box
- Television
- Music Speaker



## Smart Home

IoT electronics

- Modem / Router
- Smart Speaker
- Home Security / Surveillance Camera

[www.apc.com](http://www.apc.com)

Life Is On 

**APC**  
by Schneider Electric

## Protect your devices from power surges and outages

 *How does a UPS protect my uptime?*

### Power Surge Protection



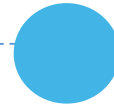
Stabilizes the main electrical line voltage to your devices

### Refined Power Supply



Protects computer and connected devices from dips and spikes caused by lightning

### Instant Power



Instant power to your equipment the exact moment the power goes out

## Battery backup is key to home continuity



The electronic devices you rely on for communication, security and entertainment depend on a stable network connection,

***Ensure reliable uptime and clean power for your critical devices.***

### Comprehensive Power Capacity Range



Models ranging from 750VA-2200VA; choose a solution aligned with your specific application and runtime needs

### Visibility and Manageability Software



In the event of an extended power outage, prevent potential data loss or corruption with PowerChute Personal Edition Software

### Form Factor:

Compact for office and business spaces (BX750MI-GR: 160 x 120 x 355 mm).

### Outlets

4 battery backup with surge protection outlets

### Functional ease-of-use

Front panel LED green lights to easily tell the functional status

### 1Gb Network Protection

Safeguards your equipment and valuable files from “back door” surges traveling along data lines without sacrificing internet speed

### Automatic Voltage Regulation (AVR)

Instantly corrects incoming utility power without utilizing the battery, saving the battery for when it is needed most

# APC Back-UPS technical specifications

## BX Series



	BX750MI-GR	BX950MI-GR	BX1200MI-GR	BX1600MI-GR	BX2200MI-GR
<b>Output</b>					
Power Rating	750VA/410W	950VA/520W	1200VA/650W	1600VA900W	2200VA/1200W
Nominal Output Voltage	230V				
Output Voltage (On Battery)	230+/-10%@ 100% load				
Output Frequency (Hz)	50/60HZ +/-0.5Hz				
Topology	Line Interactive				
Waveform Type	Stepped approximation to a sine wave				
Output Connections	4 Shuko Battery Backup	4 Shuko Battery Backup	4 Shuko Battery Backup	4 Shuko Battery Backup	4 Shuko Battery Backup
<b>Input</b>					
Nominal Input Voltage	230V				
Input Connections	CEE7				
Input Cord	1.2 m				
Input Frequency	50 Hz or 60 Hz				
USB Charging	No				
<b>Batteries &amp; runtime</b>					
Battery Type	Maintenance-free sealed Lead-Acid battery with suspended electrolyte :				
Typical Backup Time at ½ Load	8.5 min	6.5 min	5 min	6.5 min	8.5 min
Typical Backup Time at Full Load	1 min	1 min	1 min	1 min	1 min
Typical Recharge Time	6 hours	6-8 hours	8 hours	8 hours	8 hours
<b>Communications &amp; Management</b>					
LED Indicators	Visual LED indicators				
Data Line Protection	RJ 45 Gigabit				
Interface Ports	273				
Software	PowerChute Personal Edition				
<b>Physical</b>					
Dimensions (HxWxD) mm	160 x 120 x 355		190 x 140 x 390		
Weight (kg)	5.4	6.1	7.6	10.3	12.3
<b>Environmental</b>					
Operating Environment	0 - 40 °C				
Operating Relative Humidity	0 - 95 %				
Operating Elevation	0-3000 meters				
Storage Temperature	15 - 40 °C				
Storage Relative Humidity	0-95%				
<b>Conformance</b>					
Approvals	CB Meet EN62040-1 / CE / IEC-62040-1 / IEC-62040-2				
Standard warranty	2 years repair or replace				
RoHS Compliant	Yes				

Life Is On

**APC**  
by Schneider Electric